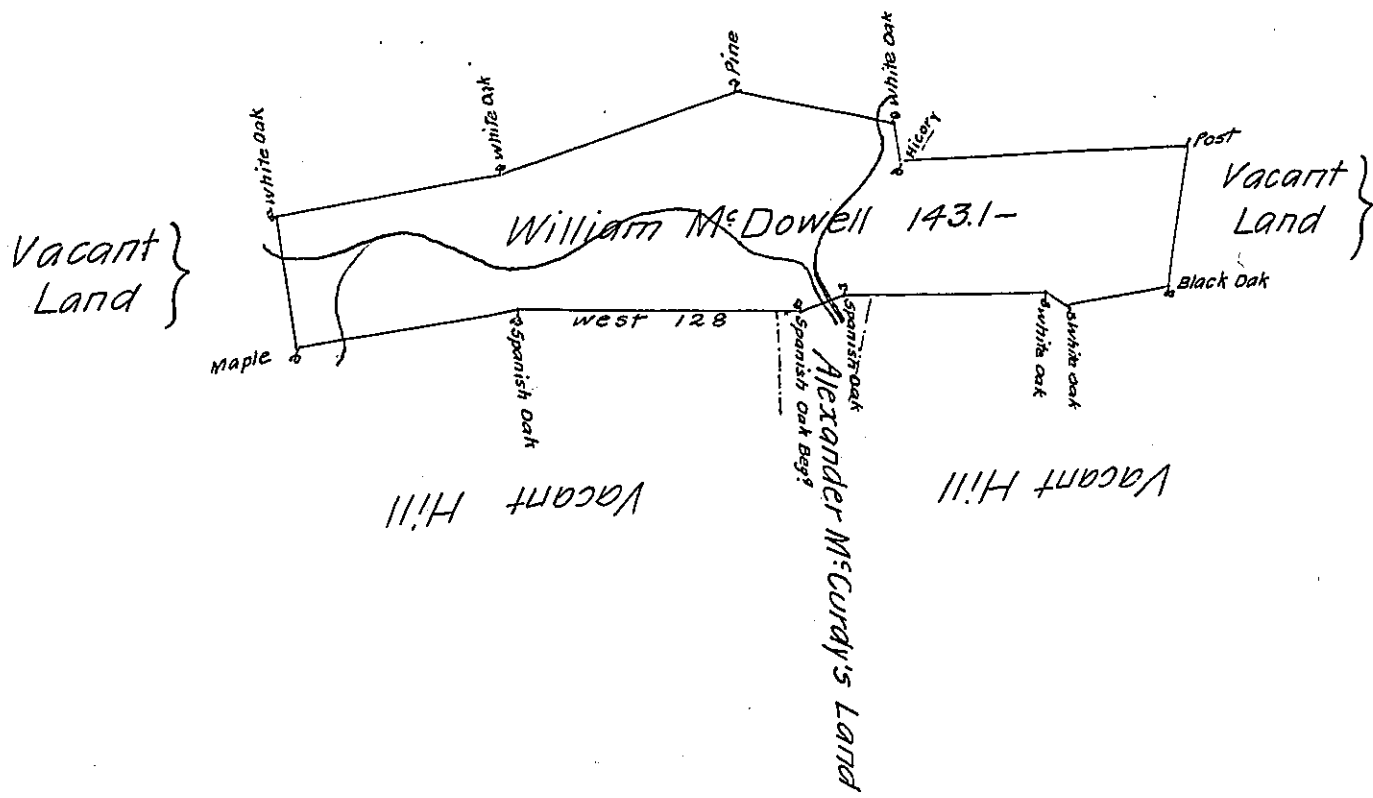


Beginning Spanish Oak  
 and by vacant Hill  
 West 128 Spanish Oak  
 S. 81. W. 98 Maple  
 N. 10. W. 50 1/2 White Oak  
 and By vacant Hills  
 N. 81. E. 135 White Oak by same  
 N. 71. E. 111 Pine by same  
 S. 82. E. 70 White Oak Do.  
 S. 10. E. 18 Hicory by same  
 N. 86. E. 128 Post by Vacant Land  
 S. 8. W. 60. B. Oak by Hills  
 S. 80. W. 46 White O.  
 N. 44. W. 10 White oak  
 West 90 Spanish Oak  
 S. 64. W. 16 to Begin g

By vacant Hills

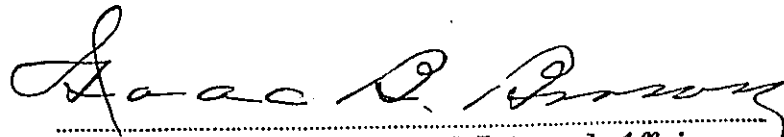


The Draught of a Tract of Land called \_\_\_\_\_ situate on  
 the north Branch of Buffalo Creek in the County of Berks containing  
 One Hundred Forty Three acres 17 Perches with the usual allowance of  
 Six acres P. Cent. For Roads. Survey'd the 9th. day of August Anno Dom: 1769  
 In Pursuance of an Order of Survey dated at Philad<sup>a</sup> the 3d. day of April 1769  
 to William M<sup>c</sup>Dowell Numbered 698.

p- Wm. Maclay D.S.

To John Lukens Esq. S.G. }  
 of Pennsylvania }

IN TESTIMONY that the above is a copy of the original remaining on file in  
 the Department of Internal Affairs of Pennsylvania, made  
 conformably to an Act of Assembly approved the 16th day of  
 February, 1833, I have hereunto set my Hand and caused  
 the Seal of said Department to be affixed at Harrisburg,  
 this second day of November 1906

  
 Secretary of Internal Affairs.